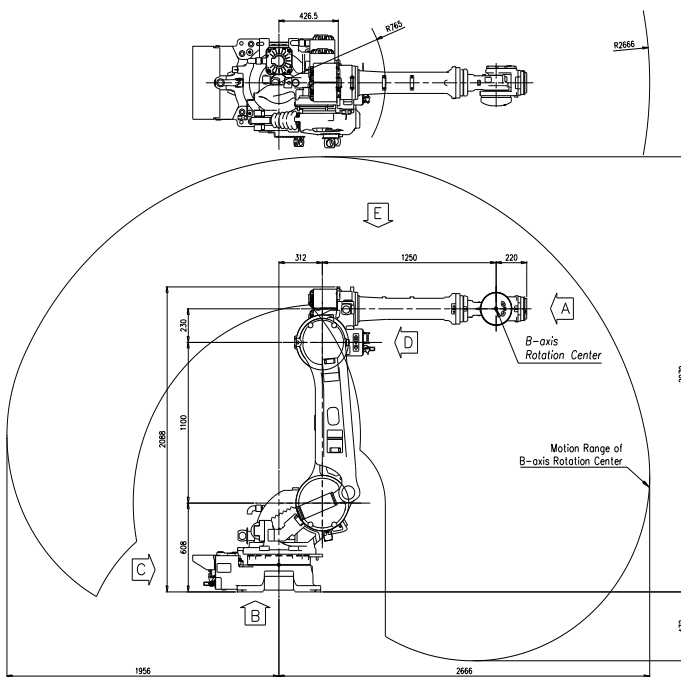


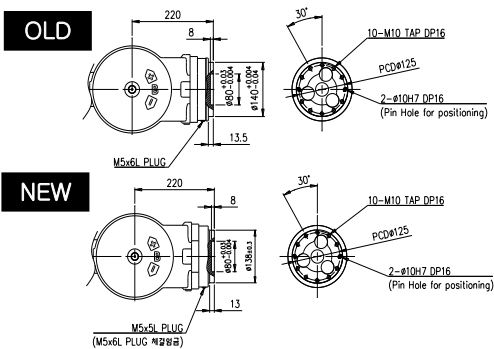
# HS180/HS220

가반중량 180Kgf/200Kgf

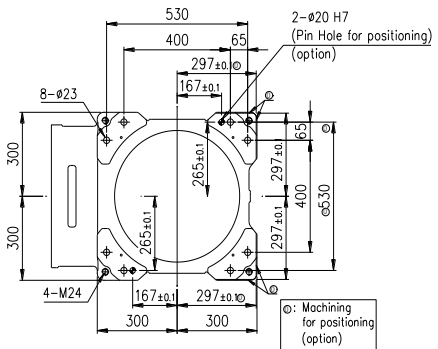
Installation method		Application	
Floor	●	Spot welding	●
Ceiling		Arc welding	
Wall surface		Handling	●
		Assembly	
		Sealing	●
		Painting	



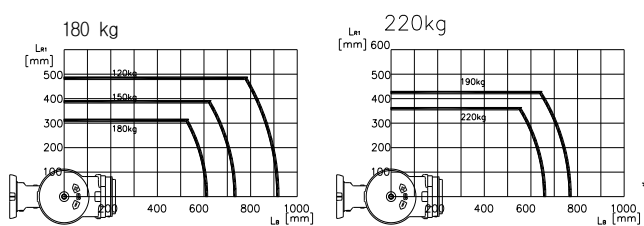
View A: Detailed drawing of the wrist attachment part



View B: Dimensional drawing for the floor installation of the body

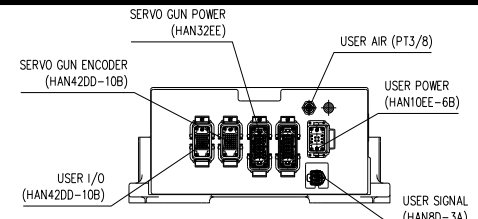


Wrist-axis torque line diagram

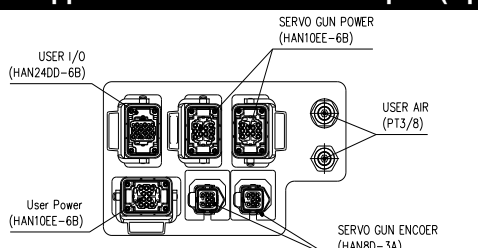


Item		Specification		
Robot model		HS220		
Payload		180 Kg	220 Kg	
Structure		Articulated		
Degree of freedom		6 axes		
Drive system		AC SERVO MOTOR		
Max. working envelope	Arm	S Swivel	±3.142 rad (±180°)	
		H Horizontal	+2.705 ~ +0.175 rad (+155° ~ +10°)	
		V Vertical	+3.316 ~ -1.396 rad (+190° ~ -80°)	
	Wrist	R2 Rotation 2	±6.283 rad (±360°)	
		B Bending	±2.234 rad (±128°)	
Max. working speed	Arm	S Swivel	2.094 rad/s (120°/s)	2.094 rad/s (120°/s)
		H Horizontal	2.007 rad/s (115°/s)	1.833 rad/s (105°/s)
		V Vertical	2.182 rad/s (125°/s)	2.007 rad/s (115°/s)
	Wrist	R2 Rotation 2	3.229 rad/s (185°/s)	2.531 rad/s (145°/s)
		B Bending	3.054 rad/s (175°/s)	2.531 rad/s (145°/s)
Wrist torque	R2 Rotation 2	1079 N·m (110 kgf·m)	1422 N·m (145 kgf·m)	
	B Bending	1079 N·m (110 kgf·m)	1422 N·m (145 kgf·m)	
	R1 Rotation 1	566 N·m (58 kgf·m)	770 N·m (79 kgf·m)	
Accuracy of position repeatability		±0.11 mm		
Ambient Temperature		0 ~ 45 °C (273 ~ 318 K)		
Robot's Weight		955Kg		

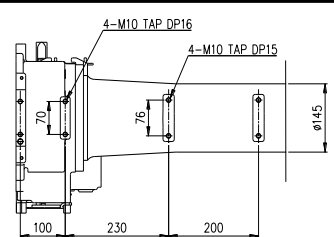
View C: Application cable connection part (Option)



View D: Application cable connection part (Option)



View E: Details of the application ancillary part attachment



\*\* For product improvement, some of the ratings, specifications, dimensions, etc. are subject to changes without notice.