

Expanding
Possibility



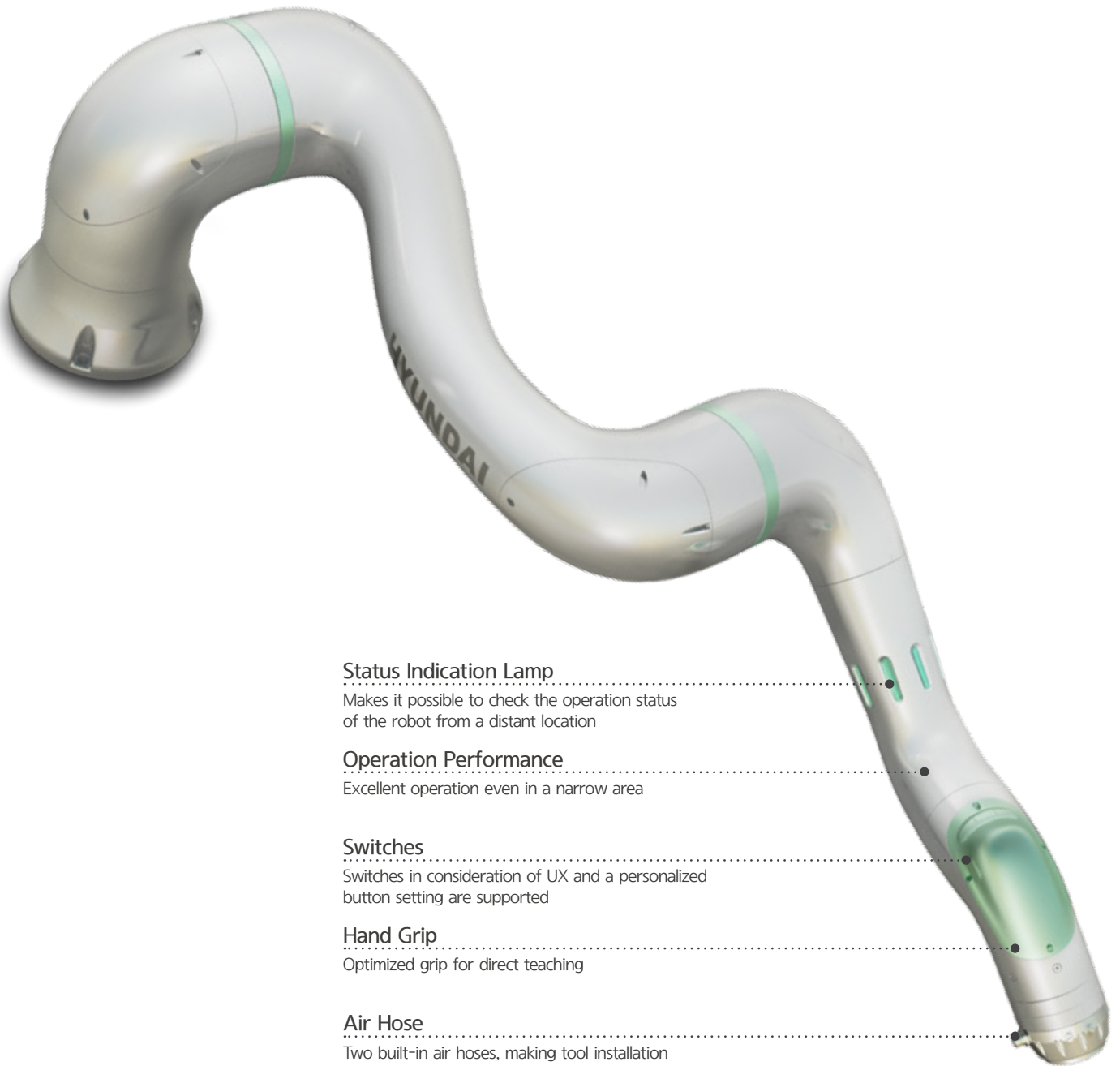
reddot award 2019
best of the best

Collaborative Robot

Human-Friendly
Collaborative Robot



 **HYUNDAI**
ROBOTICS



Status Indication Lamp

Makes it possible to check the operation status of the robot from a distant location

Operation Performance

Excellent operation even in a narrow area

Switches

Switches in consideration of UX and a personalized button setting are supported

Hand Grip

Optimized grip for direct teaching

Air Hose

Two built-in air hoses, making tool installation more convenient

12 /
kg
Payload

1,305 /
mm
Max. Reach

43 /
kg
Weight

Specifications of the Collaborative Robot



reddot award 2019
best of the best



Model

Payload	kg
Operation Radius	mm
Degree of Freedom	Axes
Installation Method	
Max. Operation Range	S °
	H
	V
	R2
	B
	R1
Maximum Speed	S °/s
	H
	V
	R2
	B
	R1
Allowable Torque for the Wrist Axis	R2 kgf-m
	B
	R1
Degree of Repeatability	mm
Operating Temperature	°C
Weight	kg
IP Grade	

YL005

5
916
6
Anywhere(Floor, Ceiling, Wall)
±180
+270 ~ -90
±180
±180
±180
±180
±180
180
180
180
180
180
180
4.9
2.7
2.8
±0.1
0~45
27
IP54

YL012

12
1,305
6
Anywhere(Floor, Ceiling, Wall)
±180
+270 ~ -90
±180
±180
±180
±180
±180
180
125
180
180
180
180
5.0
5.6
2.8
±0.1
0~45
43
IP54

YL015

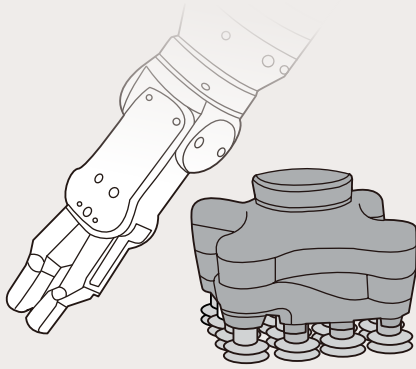
15
963
6
Anywhere(Floor, Ceiling, Wall)
±180
+270 ~ -90
±180
±180
±180
±180
±180
180
125
180
180
180
180
5.0
5.6
2.8
±0.1
0~45
42
IP54

Controller

Size	WxHxD	mm
Weight		kg
IP Grade		
I/O - flange	Digital	
	Analog	
I/O Power Supply		
Input Power	VAC	
Fieldbus/UI		

260 x 490 x 510
27
IP20
8 In / 8 Out
2 In / 2 Out
24 V
Max. 2A
100~240 (50~60Hz)
PROFINET IO, EtherNet/IP, EtherNet(TCP/IP), PROFIBUS, DeviceNet, CANOpen, CC-Link, CC-Link IE Field, EtherCAT, MODBUS/TCP

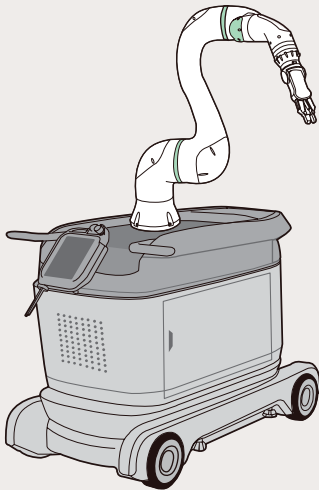
Cooperative Robot Eco System



End Effector

- Provides tools of various payloads that can be applied to various applications
- Simple programming and easy installation
- Data for modification will be provided to improve compatibility

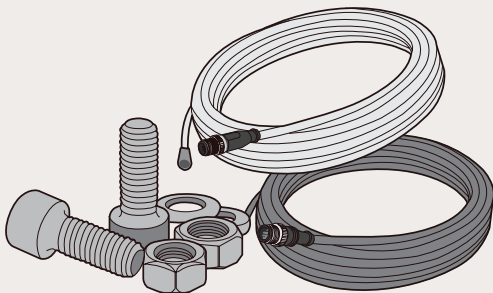
※ Optional item that needs to be purchased additionally



Mobile Cart

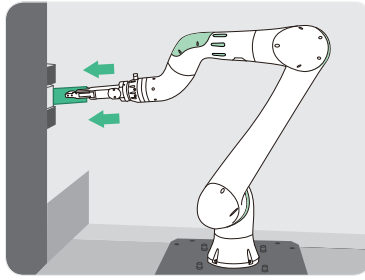
- Makes it unnecessary to perform the base work prior to the installation of the robot and helps secure an operation platform
- Makes it convenient to install and store the controller, T/P, and various peripheral devices
- Makes it simple to rearrange the layout and adjust the height
- Makes it possible to set the T/P position according to the customer's viewing angle, freeing both hands of the operator

※ Optional item that needs to be purchased additionally

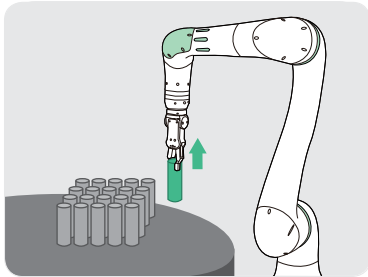


Starter Kit

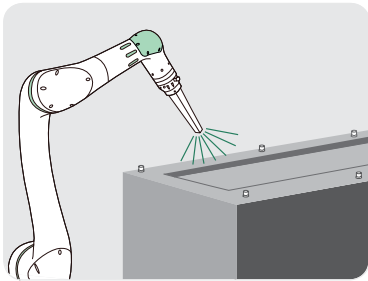
- Basic subsidiary materials necessary for installation will be provided.
- Basic cables (for I/O and EtherCAT) will be provided for interface with the end effector.



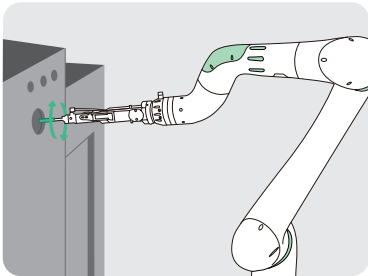
CNC Machine Tending



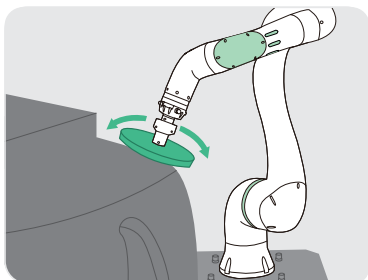
Pick & Place



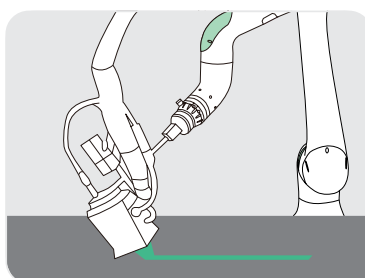
Air Blowing



Assembly (Screw, Gear)

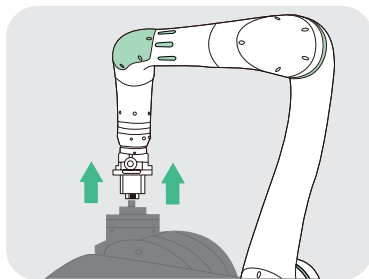


Polishing & Deburring

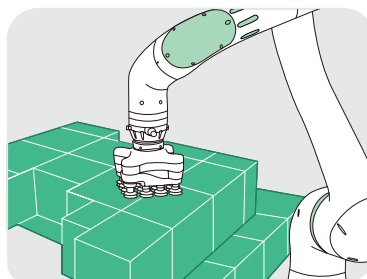


Gluing/Bonding

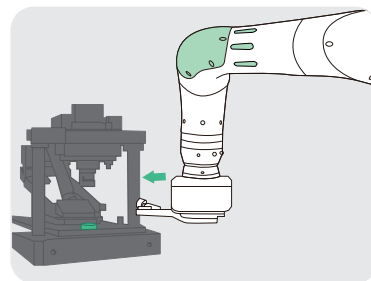




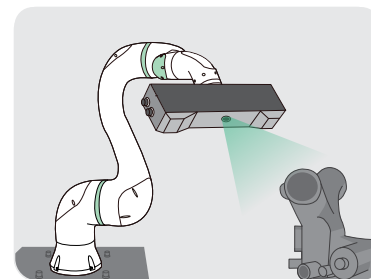
Plastic Injection Assistance



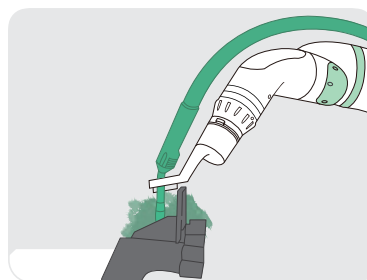
Packaging & Palletizing



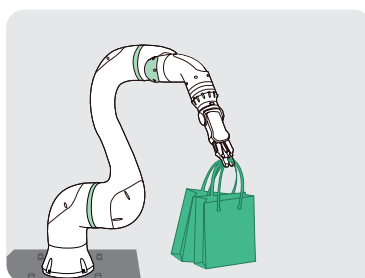
Press Forming Assistance



Inspection

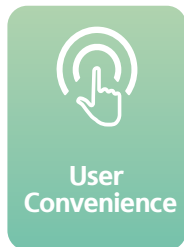


Welding

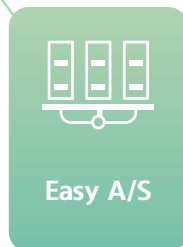


Service

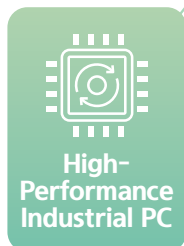
Features of the Robot



- Touch-type T/P and simple interface
- Two basic air units are provided, making additional wiring unnecessary
- The hand grip switches make it possible to perform direct teaching



- An integrated drive module that can be replaced easily is applied
- A door-type case is applied, making it easy to perform maintenance of the controller



- A buffer for the prevention of data loss because of temporary power instability is embedded
- A high-capacity power module that can be applied to high-payload collaborative robot is applied



- A safety CPU approved by an international certification institute (TÜV SÜD) is applied.
- Optimized response to the “industrial robot safety inspection” and the “collaborative robot workplace safety certification”



- A streamlined design that provides psychological tranquility for the operator
- Outright prevention of the accident of being caught through the application of a curved design



Europe

Oskar-Messter-Straße 22-24, 85737 Ismaning, München, Germany

richard.lee@
hyundai-robotics.com

www.hyundai-robotics.com



KLAIN Robotics Srl

Via Cacciamali, 67 25125 Brescia - Italy +39 030 3582154

info@klainrobotics.com

www.klainrobotics.com